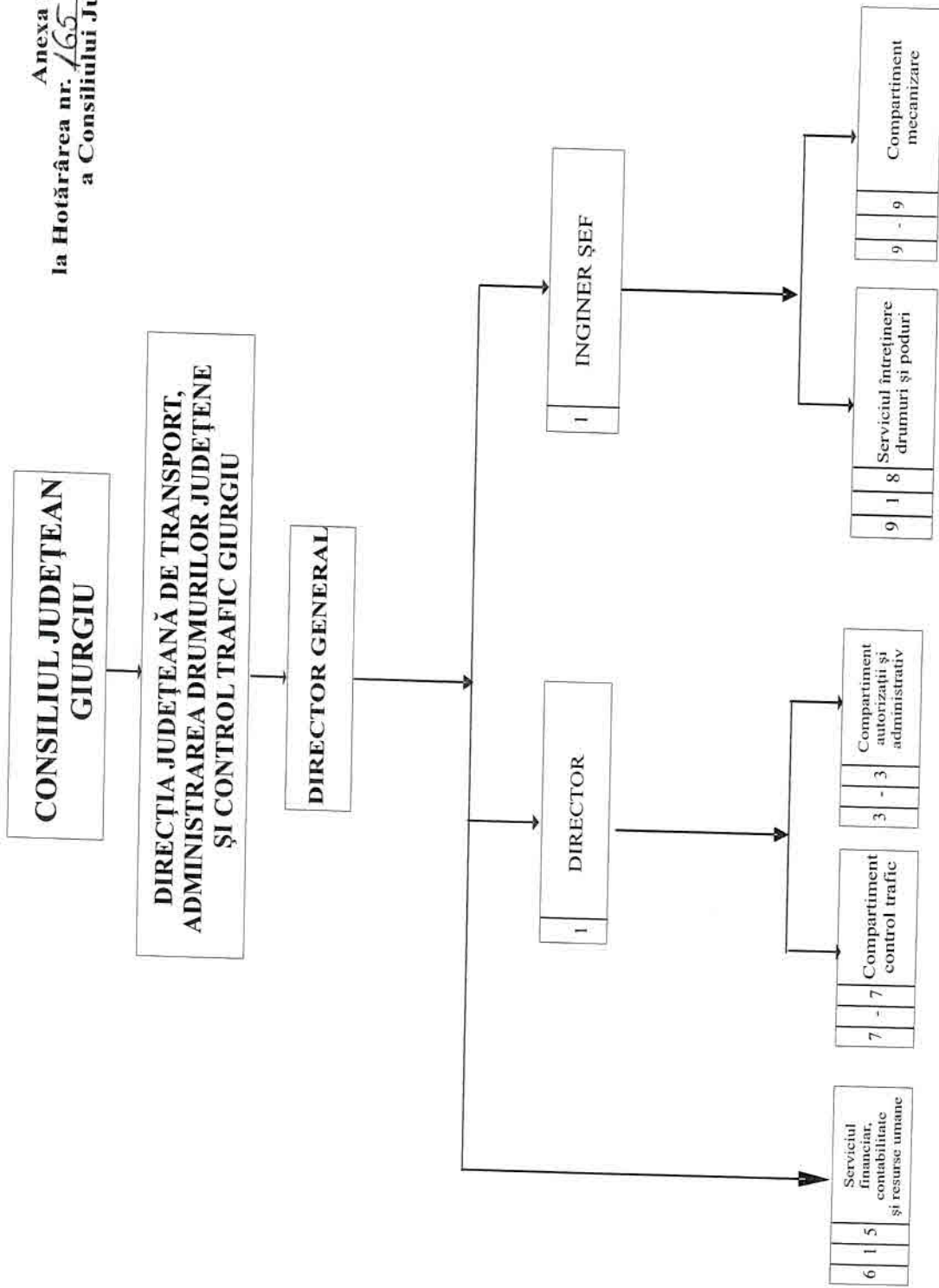


Total posturi: 37, din care:
5 de conducere
32 de execuție

Anexa nr. 1
la Hotărârea nr. 165 din 22.10.2015
a Consiliului Județean Giurgiu



DIRECTOR GENERAL,
MAFFESCU ION



STAT FUNCTII

NR.	FUNCTIA		STUDII	GRAD TREAPTA	NR POSTURI
	DE CONDUCERE	DE EXECUTIE			
0	1	2	3	4	5
	DIRECTOR GENERAL		S	II	1
	DIRECTOR		S	II	1
COMPARTIMENT CONTROL TRAFIC (7)					
	INSP SPEC		S	IA	2
	INSP SPEC		S	I	1
	INSP SPEC		S	II	1
	REFERENT		M	IA	2
	REFERENT		M	I	1
COMPARTIMENT AUTORIZATII SI ADMINISTRATIV (3)					
	INSP SPEC		S	II	1
	REFERENT		M	IA	1
	MUNC. CALIF		M	IV	1
	INGINER SEF		S	I	1
SERVICIUL INTRETINERE DRUMURI SI PODURI (9-1-8)					
	SEF SERVICIU		S	II	1
	INSPECTOR		SSD	IA	1
	REFERENT		M	IA	1
	SOFER		M		3
	MUNC. CALIF		M	I	3
COMPARTIMENT MECANIZARE (9)					
	REFERENT		M	IA	1
	SOFER		M		3
	MUNC. CALIF		M	I	5
SERVICIUL FINANCIAR CONTABILITATE SI RESURSE UMANE (6-1-5)					
	SEF SERVICIU		S	II	1
	CONSILIER		S	IA	1
	INSP SPEC		S	IA	1
	INSP. SPEC		S	I	1
	INSP. SPEC		S	DEB	1
	REF DE SPEC.		SSD	IA	1

TOTAL POSTURI 37
 din care:
 conducere 5
 executie 32



Intocmit,
 Budrinca Gina