

DEMISOL - S.A.J. GIURGIU

ANEXA 1 4
H.C.J. Giurgiu nr. 169 / 31.01.201

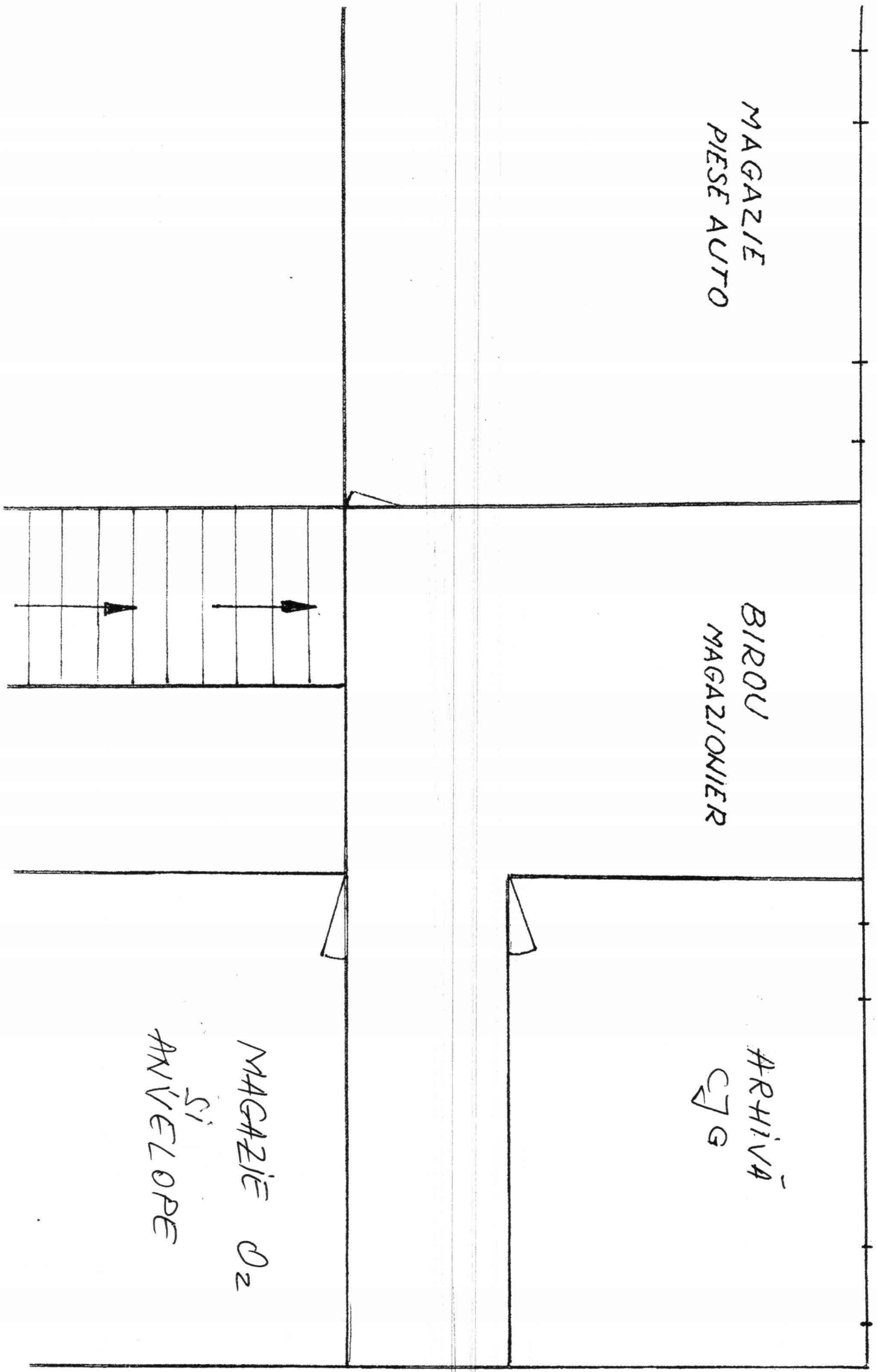
S = 160 mp

MAGAZIE
PIESE AUTO

BIROU
MAGAZIONIER

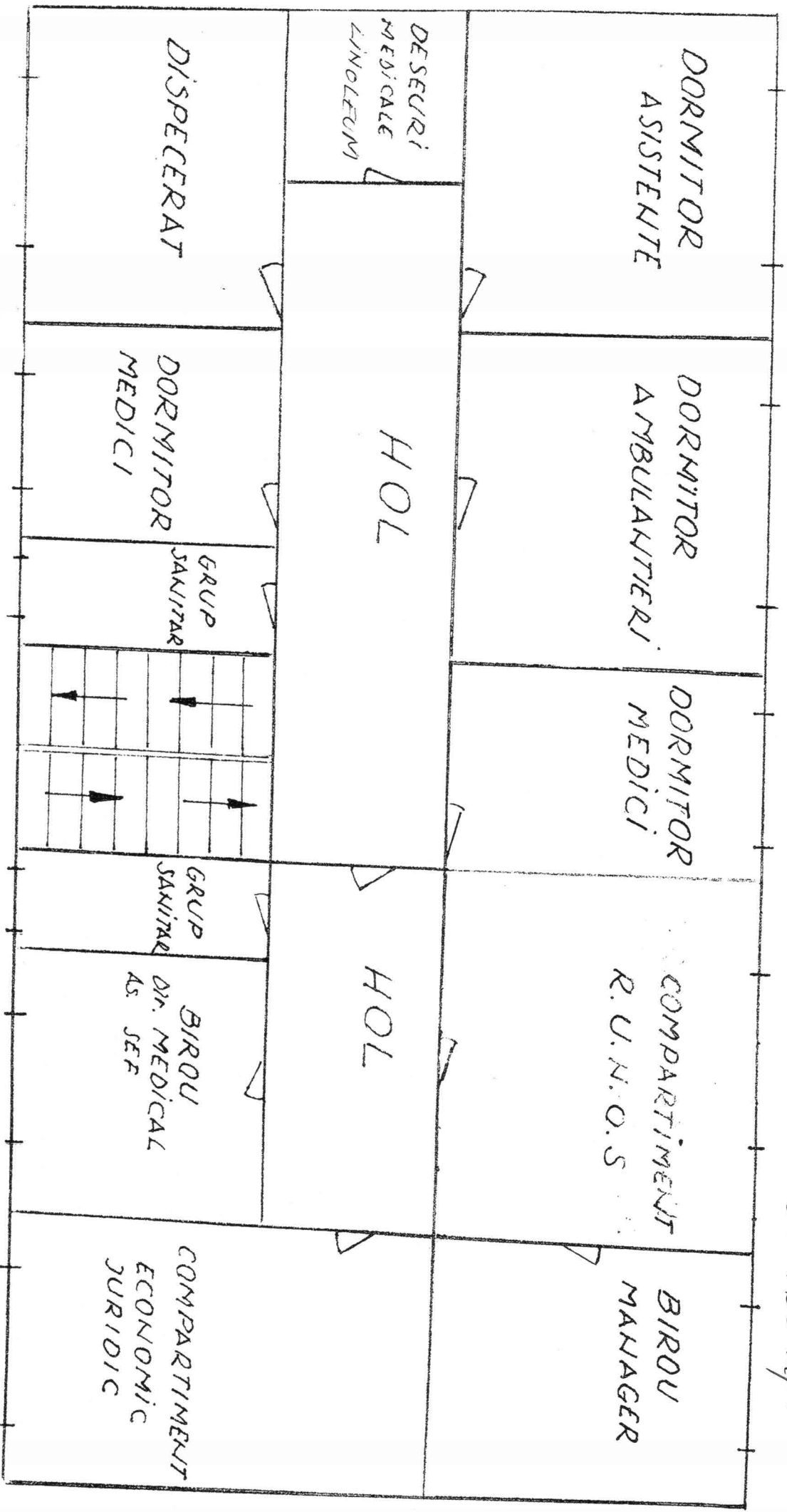
ARHIVA
CJG

MAGAZIE 02
SI
ANVELOPE



ETAJ-I - S.A.J. GIURGIU

S = 160 mp.



ANEXA 3 CA
H.C.J. Giurgiu 163 / 31.08.2014

ETAJ-III- S.A.J. GIURGIU

S = 90 mp

