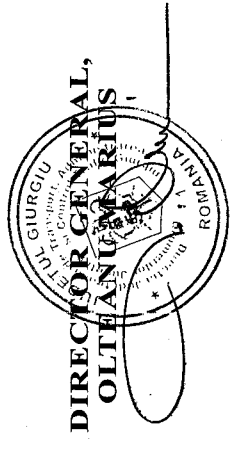
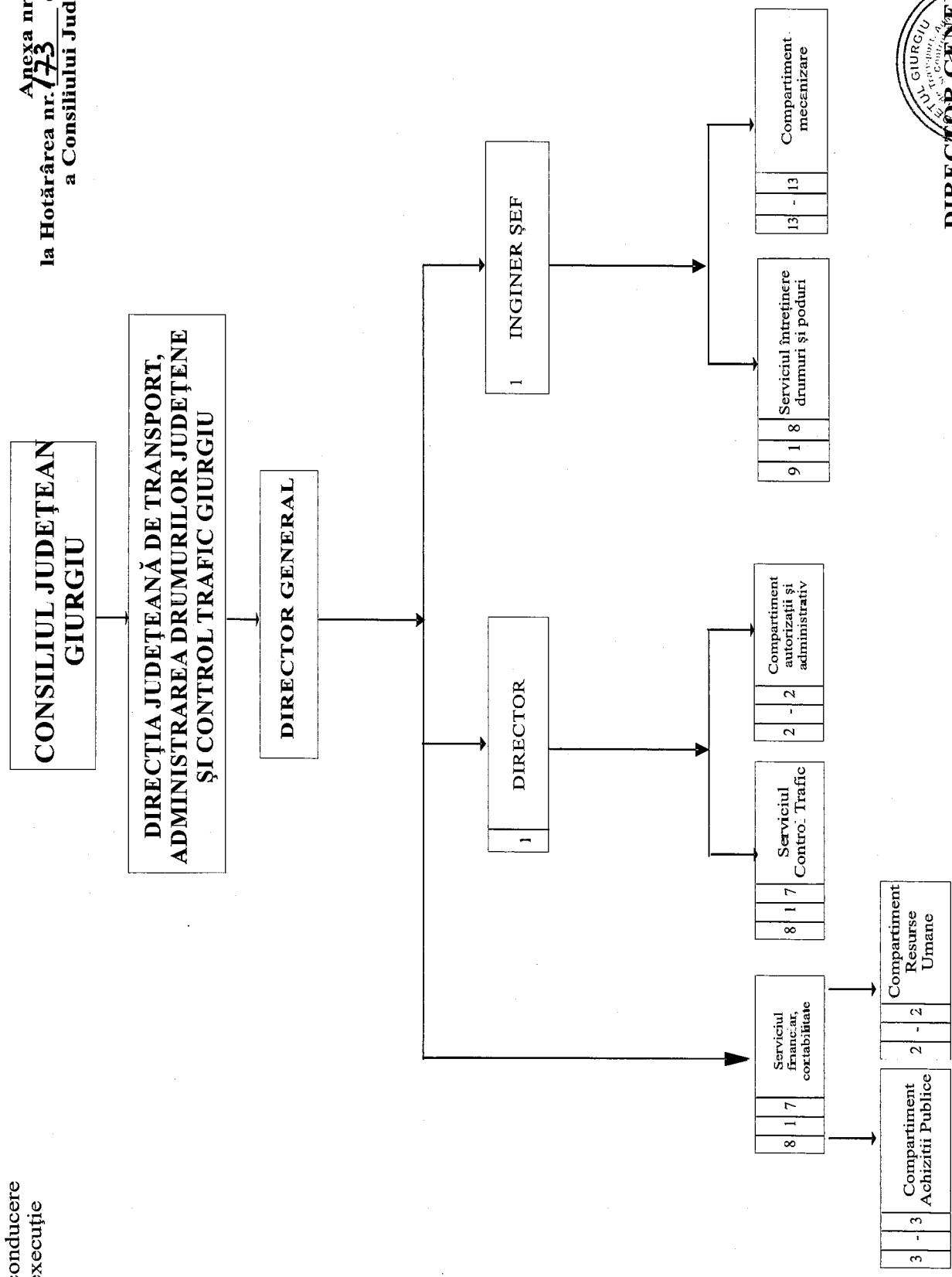


Total posturi: 43, din care:
6 de conducere
37 de execuție

Anexa nr. 1
la Hotărârea nr. 173 din 19.12.2018
a Consiliului Județean Giurgiu



STAT FUNCTII

NR.	FUNCTIA		STUDII	GRAD TREAPTA	NR POSTURI
	DE CONDUCERE	DE EXECUTIE			
0	1	2	3	4	5
	DIRECTOR GENERAL		S	II	1
	DIRECTOR		S	II	1
SERVICIUL CONTROL TRAFIC (8-1-7)					
	SEF SERVICIU		S	II	1
		INSP SPEC	S	IA	4
		INSP SPEC	S	IA	1
		REFERENT	M	IA	1
		REFERENT	M	I	1
COMPARTIMENT AUTORIZATII SI ADMINISTRATIV (2)					
		REFERENT	M	IA	1
		MUNC. CALIF	M	IV	1
	INGINER SEF		S	I	1
SERVICIUL INTRETINERE DRUMURI SI PODURI (9-1-8)					
	SEF SERVICIU		S	II	1
		REFERENT	M	IA	2
		MUNC. CALIF	M	I	6
COMPARTIMENT MECANIZARE (13)					
		SOFER	M	I	9
		MUNC. CALIF	M	I	4
SERVICIUL FINANCIAR CONTABILITATE (8-1-7)					
	SEF SERVICIU		S	II	1
		INSP. SPEC	S	I	1
		REF DE SPEC.	SSD	IA	1
COMPARTIMENT ACHIZITII PUBLICE					
		INSP SPEC	S	IA	1
		INSP. SPEC	S	IA	1
		INSPECTOR	SSD	IA	1
COMPARTIMENT RESURSE UMANE					
		CONSILIER	S	IA	1
		INSP SPEC	S	II	1

TOTAL POSTURI

43

din care:

conducere

6

executie

37

**DIRECTOR GENERAL,
 OLTEANU MARIUS**



Întocmit,
 Budrinca Gina