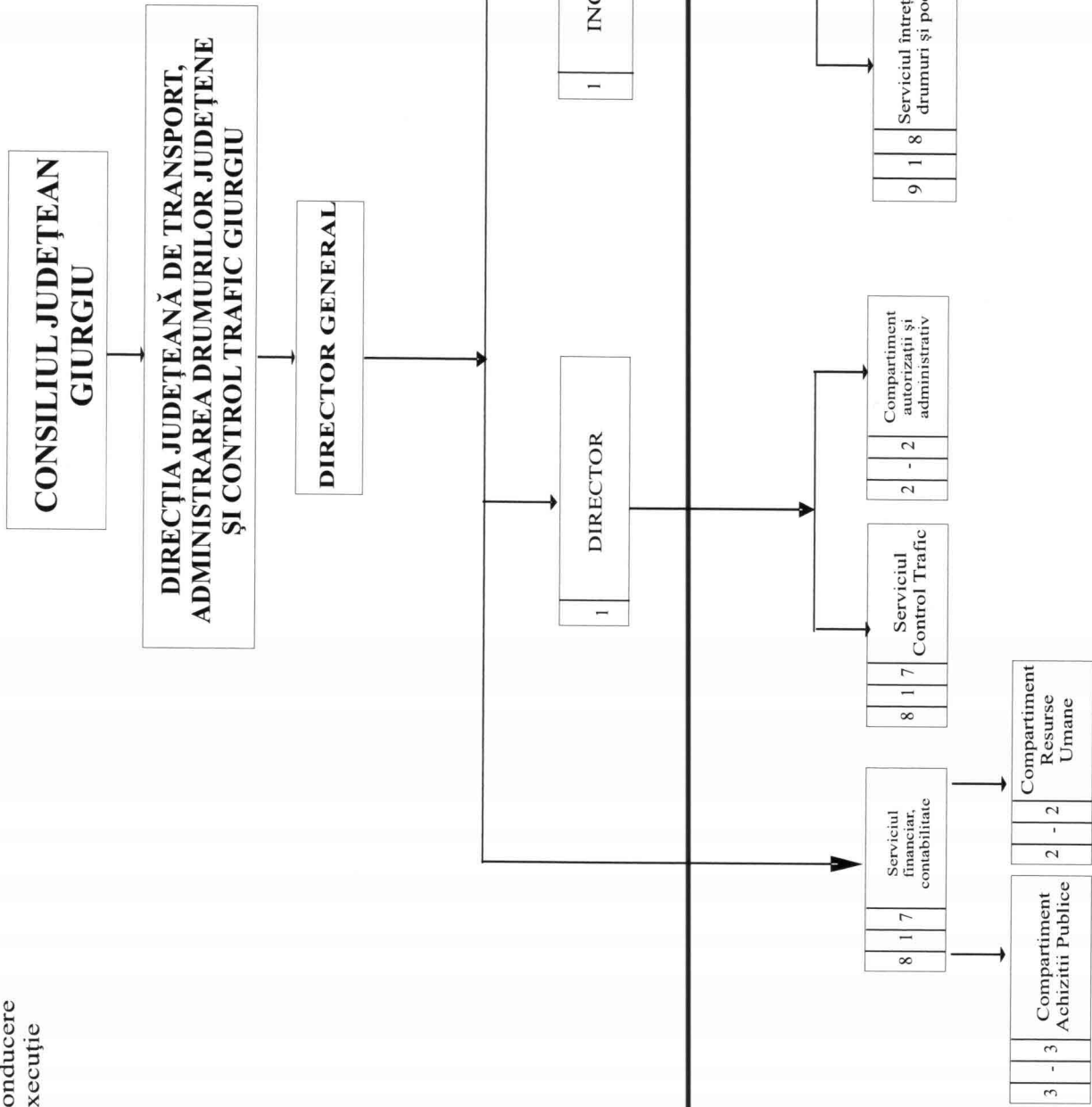


Total posturi: 41, din care:  
6 de conducere  
35 de execuție

Anexa nr. 1  
la Hotărârea nr. 204 din 11.10.2017  
a Consiliului Județean Giurgiu



**DIRECTOR GENERAL,**  
**OLTEANU MARIUS**



**STAT FUNCTII**

NR.	FUNCTIA		STUDII	GRAD TREAPTA	NR POSTURI
	DE CONDUCERE	DE EXECUTIE			
0	1	2	3	4	5
	DIRECTOR GENERAL		S	II	1
	DIRECTOR		S	II	1
<b>SERVICIUL CONTROL TRAFIC (8-1-7)</b>					
	SEF SERVICIU		S	II	1
		INSP SPEC	S	IA	4
		INSP SPEC	S	I	1
		REFERENT	M	IA	1
		REFERENT	M	I	1
<b>COMPARTIMENT AUTORIZATII SI ADMINISTRATIV (2)</b>					
		REFERENT	M	IA	1
		MUNC. CALIF	M	IV	1
	INGINER SEF		S	I	1
<b>SERVICIUL INTRETINERE DRUMURI SI PODURI (9-1-8)</b>					
	SEF SERVICIU		S	II	1
		REFERENT	M	IA	2
		MUNC. CALIF	M	I	6
<b>COMPARTIMENT MECANIZARE (11)</b>					
		SOFER	M	I	8
		MUNC. CALIF	M	I	3
<b>SERVICIUL FINANCIAR CONTABILITATE (8-1-7)</b>					
	SEF SERVICIU		S	II	1
		INSP. SPEC	S	I	1
		REF DE SPEC.	SSD	IA	1
<b>COMPARTIMENT ACHIZITII PUBLICE</b>					
		INSP SPEC	S	IA	1
		INSP. SPEC	S	II	1
		INSPECTOR	SSD	IA	1
<b>COMPARTIMENT RESURSE UMANE</b>					
		CONSILIER	S	IA	1
		INSP SPEC	S	II	1

TOTAL POSTURI 41  
 din care:  
 conducere 6  
 executie 35

DIRECTOR GENERAL,  
 OLTEANU MARIUS



Intocmit,  
 Budrinca Gina